

## FAQ

### CAN I LEAVE MY BOAT OVERNIGHT WITHOUT BEING A TENANT?

Yes! Camana Bay's Harbour is open to the public. Visitors can dock at the harbour overnight for a fee.

### HOW DO I KNOW IF MY BOAT WILL FIT?

The canals are designed to accommodate vessels with up to 5.5-foot draft to safely enter the harbour.

### I HAVE VALUABLES ON BOARD. IS MY PROPERTY SAFE?

All items on your vessel are left at your own risk. However, the harbour is closely monitored by our 24-hour security team.

### I AM HAVING ISSUES WITH MY SLIP. WHAT SHOULD I DO?

We have a dedicated team that oversees the harbour. Whenever you need assistance, contact [harbour@camanabay.com](mailto:harbour@camanabay.com).

The team is also available via VHF marine radio under call-sign: *Camana Bay*. For urgent matters, please call the security desk on +1.345.640.4357 (HELP). For emergencies call 911.

### WHERE IS THE HARBOUR ENTRANCE LOCATED?

The entrance to the harbour is located at coordinates (19°19.489N/81°21.787W).

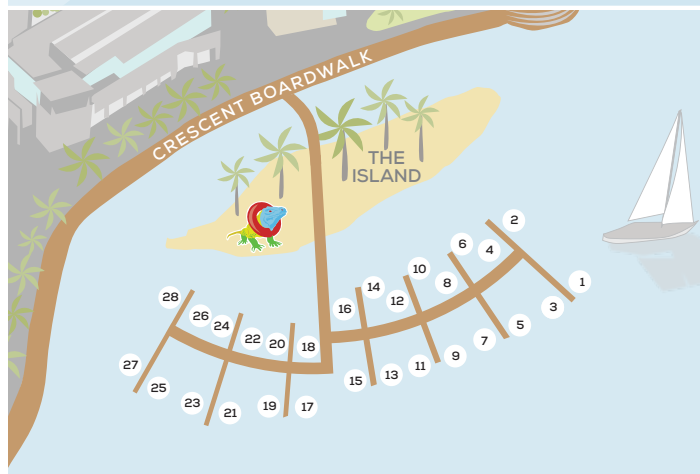
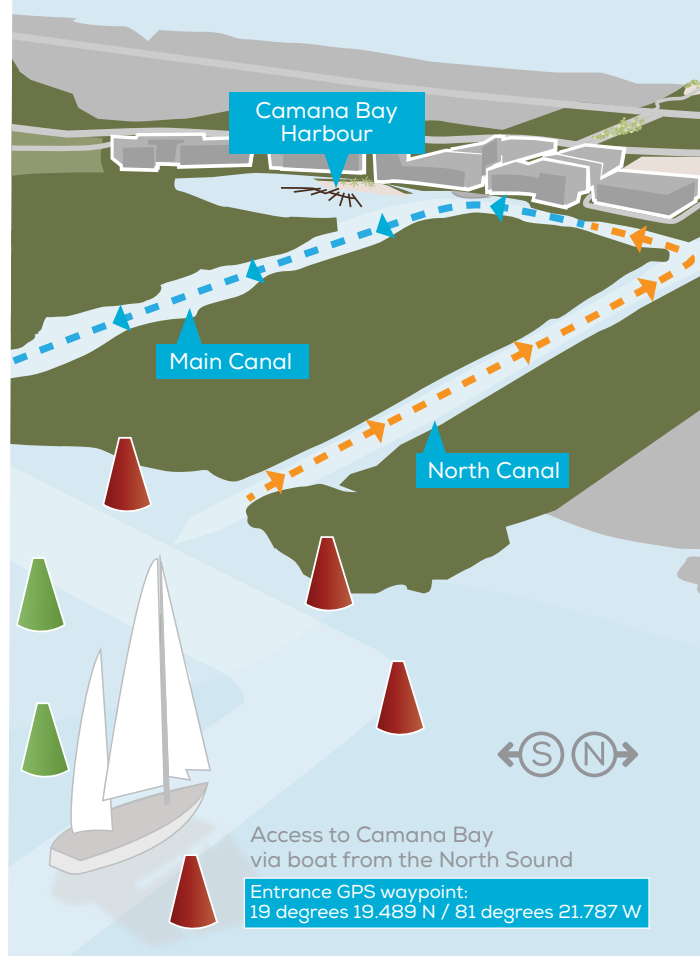
The one-way system is clearly marked by signs. Enter the harbour through the North Canal and exit the harbour using the South Canal.

### ARE SLIPS PROVIDED FOR PRIVATE VESSELS?

The Camana Bay Harbour accommodates private and commercial vessels.

### I WANT A HARBOUR SLIP. HOW DO I START THE PROCESS?

Send an email to the harbour team at [harbour@camanabay.com](mailto:harbour@camanabay.com). The team will guide you through the easy steps for leasing a harbour slip.



# DOCK AT THE BAY

+1.345.640.4000 or  
[harbour@camanabay.com](mailto:harbour@camanabay.com)  
**CAMANABAY.COM**



CAMANABAY



CAMANABAY

where life blossoms

If you enjoy  
spending time  
out on the water,  
look no further than  
**Camana Bay.**

### SLIP RATES

- LONG-TERM/MONTHLY RENTAL  
Non-serviced slip - CI\$10  
Serviced slip (partial\*) - CI\$11  
Serviced slip (full\*\*) - CI\$13.50
- Rates calculated per linear foot
- Standard contracts are 12 months
- Partial (private vessel): water CI\$20.50 OR electricity CI\$32.80 per month
- Partial (commercial vessel): water CI\$28.70 OR electricity CI\$53.30 per month
- Full (private vessel): CI\$53.30 per month
- Full (commercial vessel): CI\$82.00 per month
- Nightly rate: CI\$25
- Security deposit: one month rental
- 5% discount: six month advanced payment
- 10% discount: Camana Bay residents
- Maximum combined discount 25%

\* Water or electricity

\*\* Water and electricity

### KEY HARBOUR REGULATIONS

- Children must be supervised at all times
- Pets must be under leash control at all times and dog waste must be instantly collected and properly disposed of
- All vessels are subject to the laws, regulations and policies governing the use of marine crafts
- No swimming, fishing, loud music or clothing hanging off the sides of vessels while docked at slips
- No fish cleaning allowed on slips/boardwalk
- No major engine repairs allowed on slips/boardwalk
- No jet skis or wakeboarding are permitted
- Trash and garbage bags must be disposed of properly and are not permitted to be left on the dock
- Vessels and contents are docked at owner's risk
- The discharge of toilets, bilges, petroleum or other hazardous materials is strictly prohibited
- The Camana Bay canals, harbour, docks, common walkways and boat slips are the private property of Camana Bay
- Access and use is always at the discretion of Camana Bay Property Management

